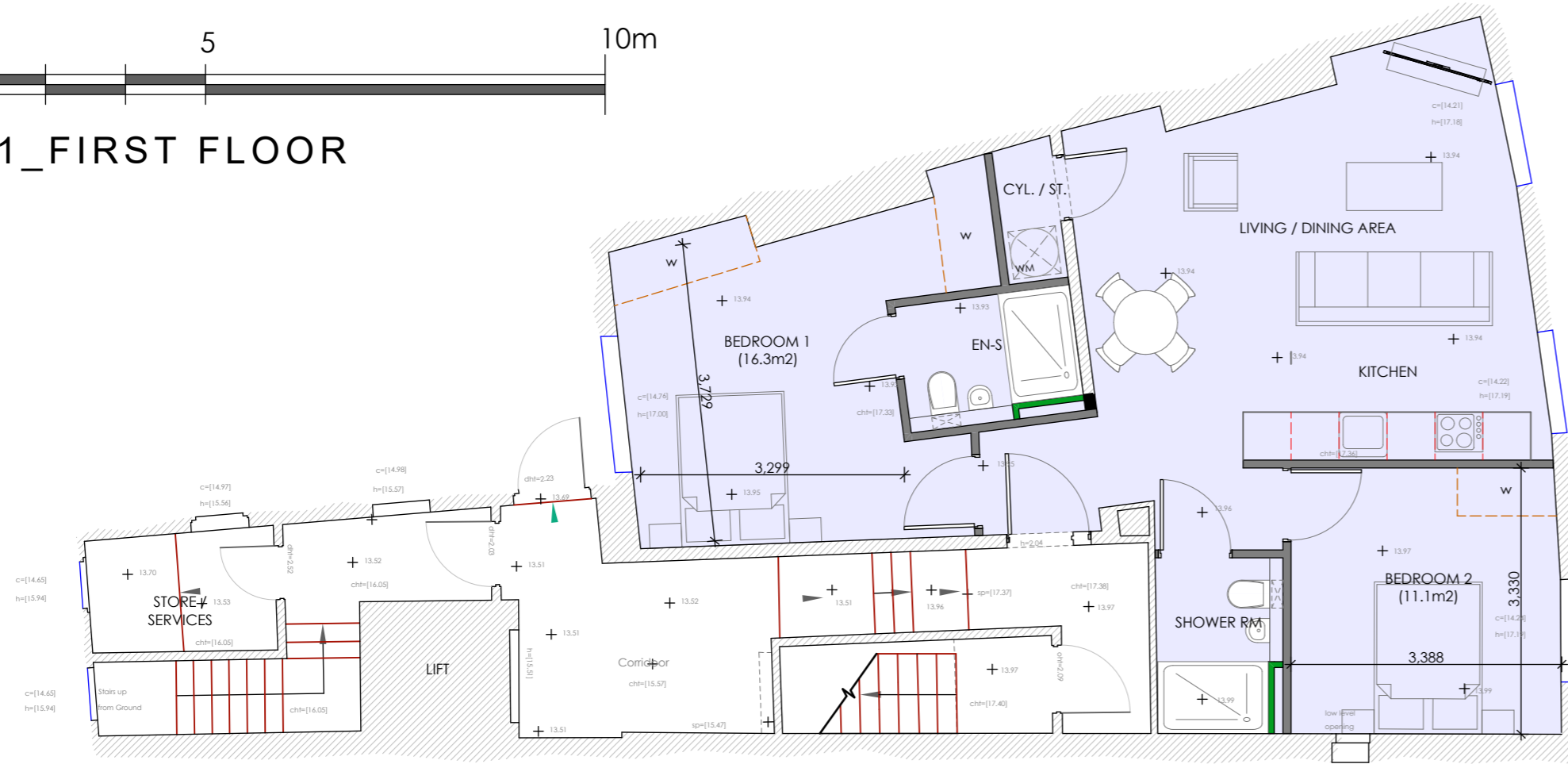
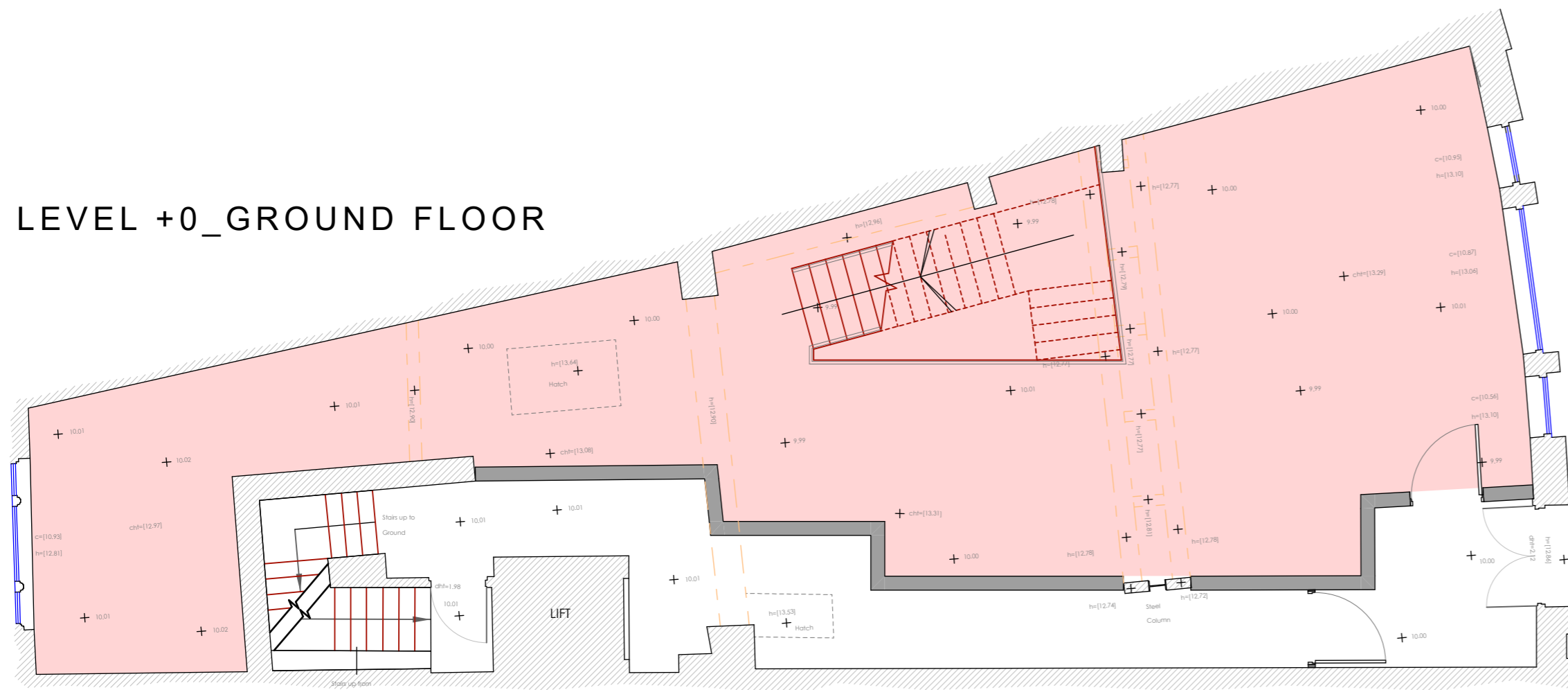


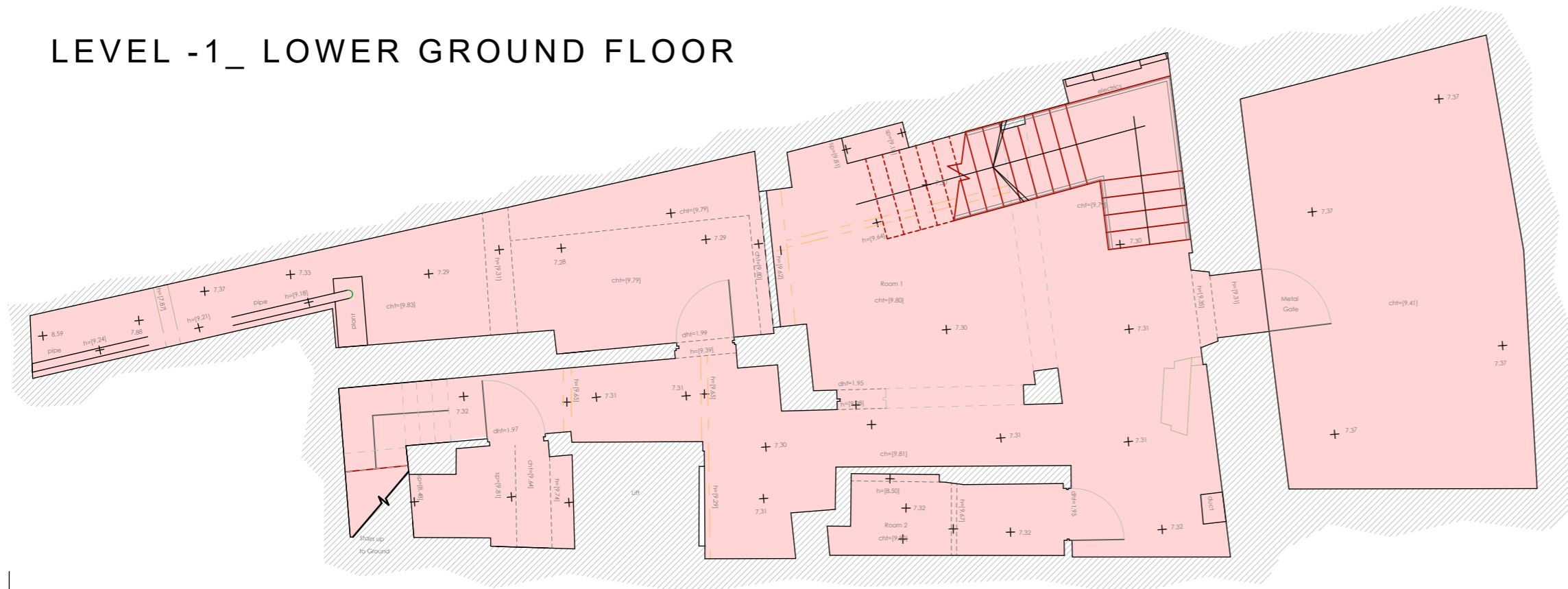
LEVEL +1\_FIRST FLOOR



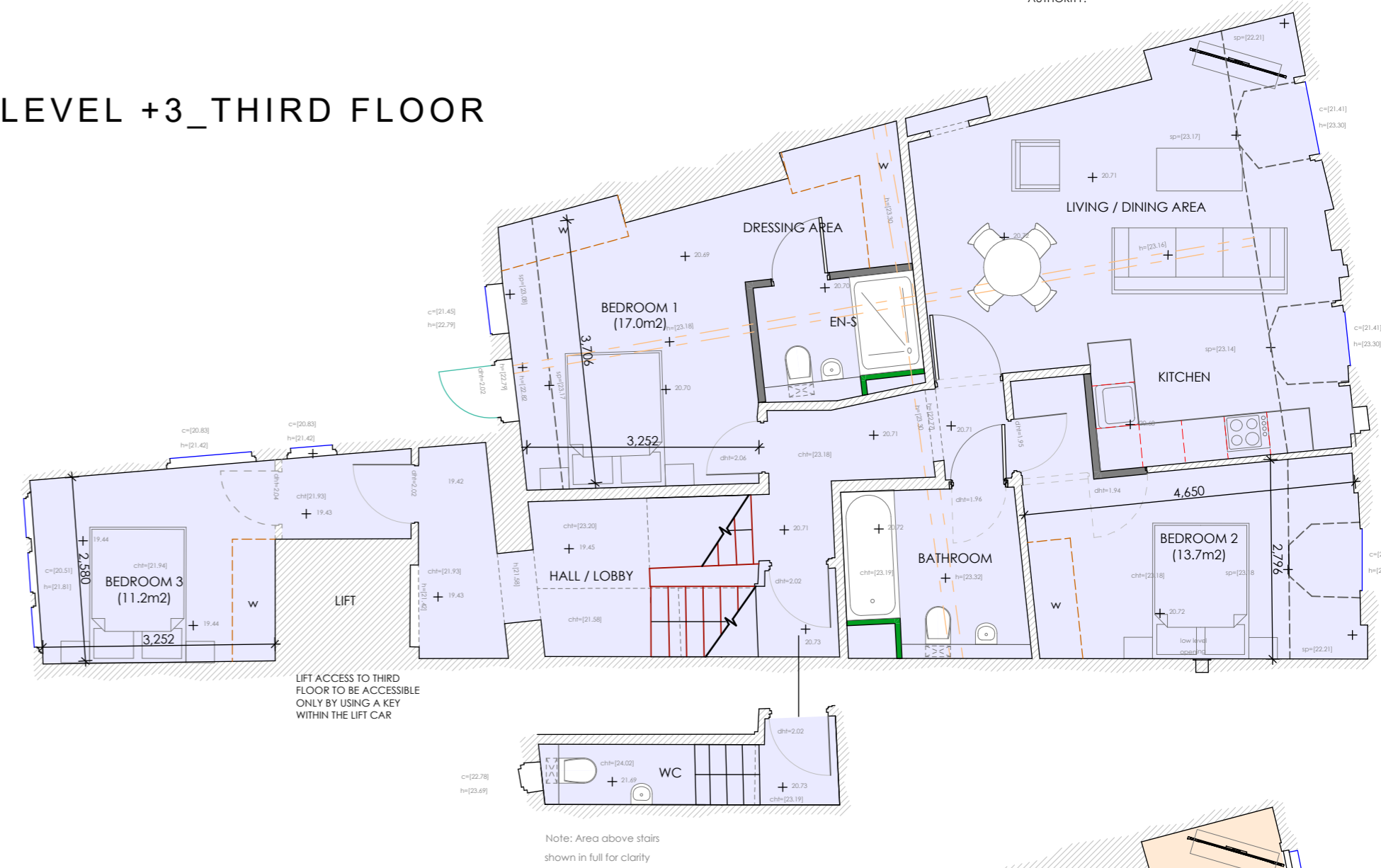
LEVEL +0\_GROUND FLOOR



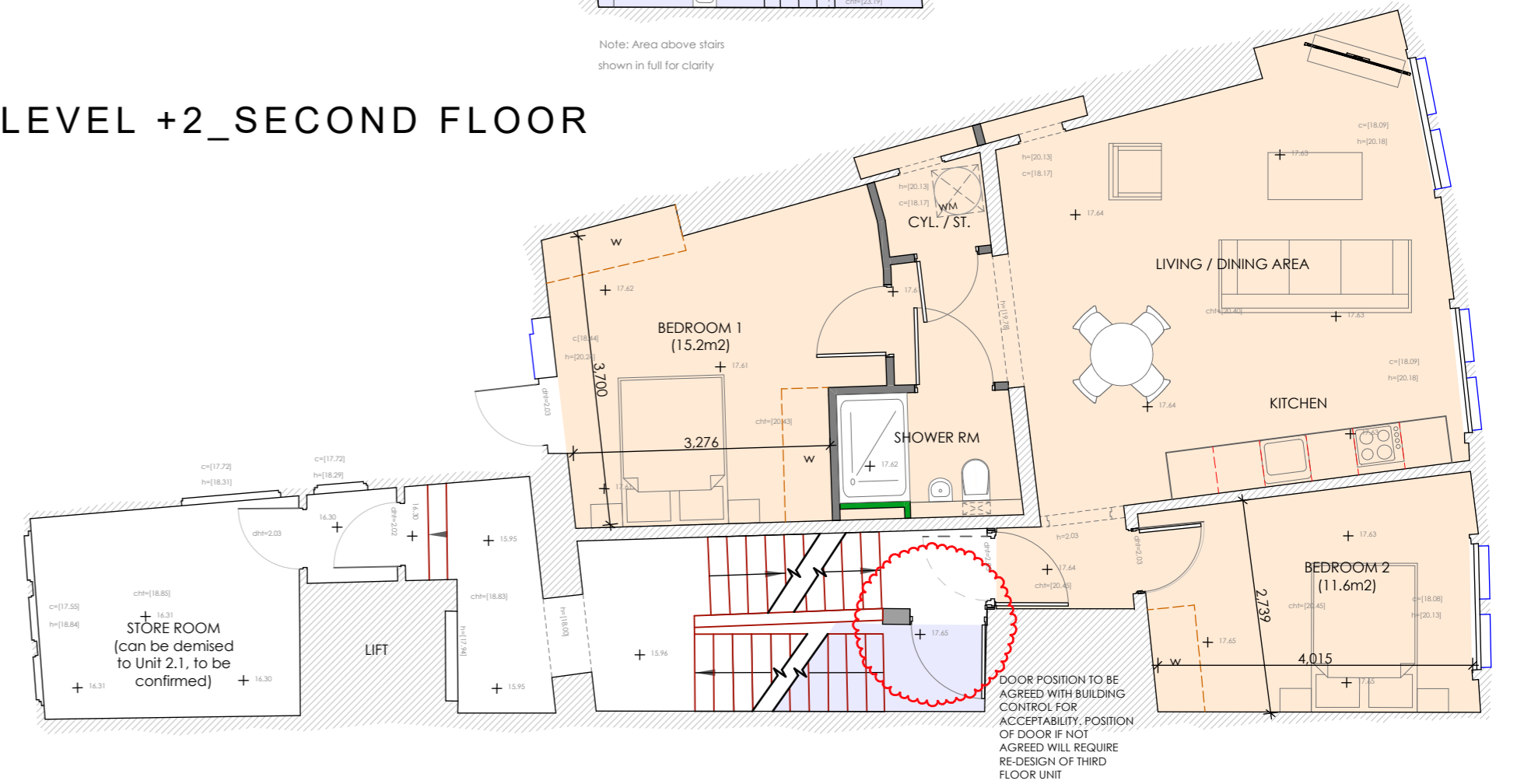
LEVEL -1\_LOWER GROUND FLOOR



LEVEL +3\_THIRD FLOOR



LEVEL +2\_SECOND FLOOR



**NOTES**  
ALL WORK TO BE CARRIED OUT IN ACCORDANCE WITH THE BUILDING REGULATIONS AND THE REQUIREMENTS OF THE LOCAL AUTHORITY.

SCHEDULE OF ACCOMMODATION

COMMERCIAL\_RETAIL UNIT\_ 183.3 m2

- UNIT 1.1\_2 bed / 3 person 68.5 m2
- UNIT 2.1\_2 bed / 3 person 68.4 m2
- UNIT 2.1\_3 bed / 5 person 104.2 m2

| REV | DESCRIPTION | BY | CHKD | DATE |
|-----|-------------|----|------|------|
|-----|-------------|----|------|------|



25A PARK SQUARE WEST, LEEDS, LS1 2PW  
T: 0113 233 7755  
W: www.loroc.co.uk

3RD FLOOR, 84 - 90 PAUL STREET, LONDON, EC2A 4BE  
T: 0033 875 5333

PROJECT: CAMBRIDGE CRESCENT HARROGATE

TITLE: PRELIMINARY INFORMATION Feasibility

PROPOSED LAYOUT\_OPTION 2 COMMERCIAL\_RETAIL & APARTMENTS

DRAWING NO.: 1643\_007(F) REVISION:

SCALE: 1:75 @ A2 DATE: JUNE 2023

DRAWN BY: IR CHECKED BY:

- PURPOSE OF ISSUE
- PLANNING
  - BUILDING REGS
  - TENDER
  - COMMENT
  - INFORMATION
  - CONSTRUCTION

THIS DRAWING IS COPYRIGHT AND THE INTELLECTUAL PROPERTY OF LOROC ARCHITECTS LIMITED. THIS DRAWING MAY NOT BE REPRODUCED IN WHOLE OR IN PART WITHOUT WRITTEN AUTHORITY. NO DIMENSIONS TO BE SCALED FROM THIS DRAWING. ALL DIMENSIONS TO BE CHECKED ON SITE PRIOR TO COMMENCEMENT OF WORKS AND ANY DISCREPANCIES REPORTED TO THE ARCHITECT/ENGINEER/CONTRACTOR.

