



SEATON HOUSE
Carlton, Leyburn



GSC GRAYS

PROPERTY • ESTATES • LAND

SEATON HOUSE

Leyburn, DL8 4AY

An attractive Grade II Listed, stone-built period property, which has been beautifully restored to create a high-quality home. A large living room with a welcoming fireplace and a wonderful large kitchen dining room finished to an exceptional standard throughout. On the first floor are three double bedrooms and a luxurious bathroom.

ACCOMMODATION

This superb three bedroom home offers an abundance of character features including; a stone cantilever staircase, exposed beams, stone flagged flooring, cast iron radiators, exposed timber flooring, stone shelving, feature alcoves, sash windows with shutters and dry stone walled gardens.

The property enjoys a good sized dining kitchen, with bespoke units, a stone sink and AGA, cosy sitting room with multi fuel stove, a secondary kitchen/ boot room, utility and a ground floor shower room. To the first floor there are three bedrooms with lovely views, including a particularly spacious principal bedroom. There is also a high quality bathroom complete with roll top bath and bespoke vanity stand.

Externally, there are attractive stone patio gardens to the front and rear.



5&6 Bailey Court Colburn Business Park, Richmond, North Yorkshire, DL9 4QL

01748 829217

agency@gscgrays.co.uk

GSCGRAYS.CO.UK



Situation and Amenities

Main line train services from Northallerton (23 miles), Airports are at Newcastle, Leeds and Middleton St George (Durham Tees Valley). Access to A1 North/South is at Leeming Bar (18 miles). Please note that all distances are approximate.

The village of Carlton is located in the heart of the Yorkshire Dales National Park in Coverdale. It has an exceptional public house, village hall and super play park for children, as well as several walks on the doorstep. The market town of Leyburn is approx. 6 miles away, and boasts a local market, several hotels/restaurants/public houses, a livestock mart and the well renowned Tenants.

There are also primary schools at Middleham and Leyburn and a secondary schools at Leyburn and Richmond. Private education options are at Newton le Willows, Barnard Castle and Sedbergh.





Accommodation Comprises: Ground Floor

The solid front door leads into an entrance porch with stone flagged flooring which runs throughout the ground floor and a stable door into the dining kitchen.

The dining kitchen is a spacious room with bespoke handmade units, made from Canadian pine with granite work surfaces, oil fired cream Aga and stone surround, stone sink and sash window overlooking the front garden with timber shutters, and latch door into the sitting room.

The sitting room has three substantial windows overlooking the front garden, a fireplace with a multi fuel stove and stone surround, exposed stone walls and a period feature alcove with shelving.

The rear hallway leads to the utility and secondary kitchen/ boot room, steps down to an open cellar which can be used for additional storage and the staircase to the first floor. The secondary kitchen has fitted units with solid timber surfaces, stainless steel sink, ceramic hob and double oven, stone shelves, Parquet flooring and space for a dishwasher and a traditional door to the rear garden. The laundry room/ utility houses the oil boiler and a sliding door into the ground floor shower room.



First Floor

There is an original stone cantilever with period banister, a feature alcove and exposed timber floorboards throughout the first floor. There are three bedrooms, two of which are spacious doubles, with countryside views to the front.

The house bathroom has a quality suite, including a roll top bath, walk-in shower with period style shower head, bespoke vanity basin and WC.

Externally

To the front of the property there is a stone flagged patio seating area, with steps leading up to the front door and well stocked flower beds.

To the rear of the property, there is an additional low maintenance courtyard, with beautifully maintained borders, stone flagged patio, stone walled and fenced boundaries, a wrought iron gate provides access to the side and there is an external water tap.

Tenure

The property is believed to be freehold with vacant possession on completion.

Local Authority and Council Tax Band

North Yorkshire Council. Tel 01748 829100.

The property is banded D.

Services and Other Information

The property is served by oil fired central heating, mains electric and drainage connected. Private water supply from Carlton Parish.

Particulars & Photographs

The particulars were written and the photographs taken in August 2023.

Disclaimer Notice

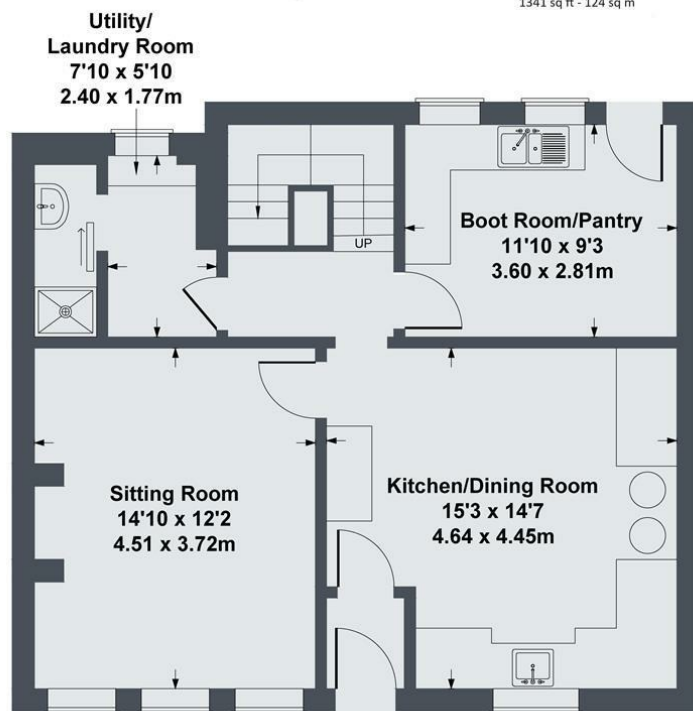
GSC Grays gives notice that:

1. These particulars are a general guide only and do not form any part of any offer or contract.
2. All descriptions, including photographs, dimensions and other details are given in good faith but no warranty is provided. Statements made should not be relied upon as facts and anyone interested must satisfy themselves as to their accuracy by inspection or otherwise.
3. Neither GSC Grays nor the vendors accept responsibility for any error that these particulars may contain however caused.
4. Any plan is for guidance only and is not drawn to scale. All dimensions, shapes, and compass bearings are approximate and should not be relied upon without checking them first.
5. Nothing in these particulars shall be deemed to be a statement that the property is in good condition, repair or otherwise nor that any services or facilities are in good working order.
6. Please discuss with us any aspects that are important to you prior to travelling to the property.

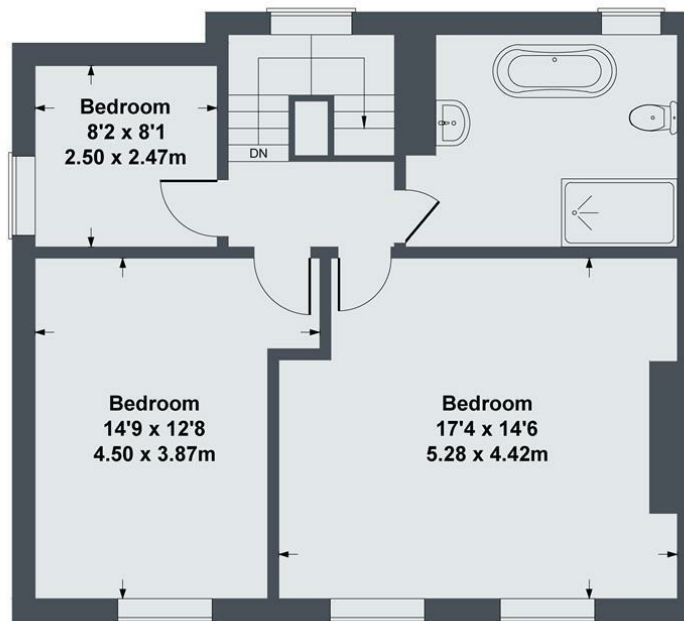
Seaton House, Carlton

Approximate Gross Internal Area

1341 sq ft - 124 sq m



GROUND FLOOR



FIRST FLOOR

SKETCH PLAN FOR ILLUSTRATIVE PURPOSES ONLY

All measurements walls, doors, windows, fittings and appliances, their sizes and locations, are approximate only. They cannot be regarded as being a representation by the seller, nor their agent.

Produced by Potterplans Ltd. 2023

DISCLAIMER NOTICE:

PLEASE READ: GSC Grays gives notice to anyone who may read these particulars as follows:

1. These particulars, including any plan are a general guide only and do not form any part of any offer or contract.
2. All descriptions including photographs, dimensions and other details are given in good faith but do not amount to a representation or warranty. They should not be relied upon as statements of fact and anyone interested must satisfy themselves as to their correctness by inspection or otherwise.
3. Neither GSC Grays nor the vendor accept responsibility for any error that these particulars may contain however caused.
4. Any plan is for layout guidance only and is not drawn to scale. All dimensions, shapes and compass bearings are approximate and you should not rely upon them without checking them first.
5. Nothing in these particulars shall be deemed to be a statement that the property is in good condition / repair or otherwise, nor that any services or facilities are in good working order.
6. Please discuss with us any aspects that are important to you prior to travelling to the view the property.

