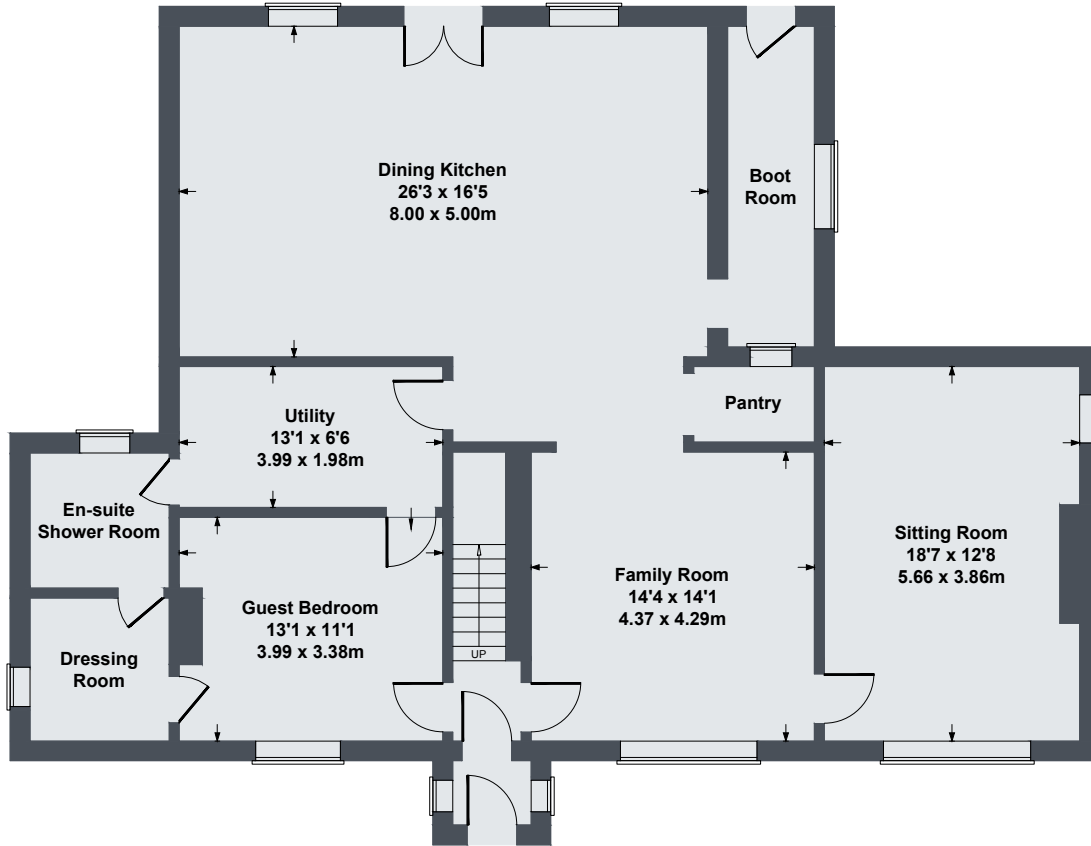


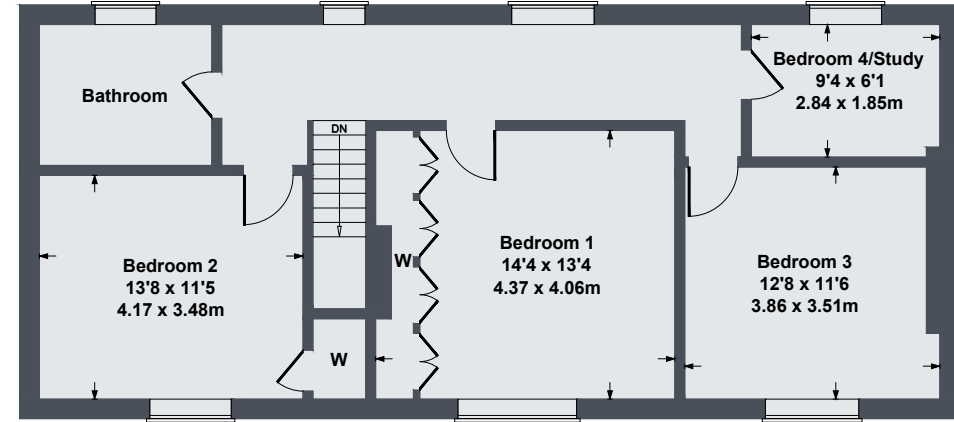
# Fir Tree Farm, High Street Whixley

Approximate Gross Internal Area

2314 sq ft - 215 sq m



**GROUND FLOOR**



**FIRST FLOOR**

SKETCH PLAN FOR ILLUSTRATIVE PURPOSES ONLY

All measurements walls, doors, windows, fittings and appliances, their sizes and locations, are approximate only. They cannot be regarded as being a representation by the seller, nor their agent.

Produced by Potterplans Ltd. 2025