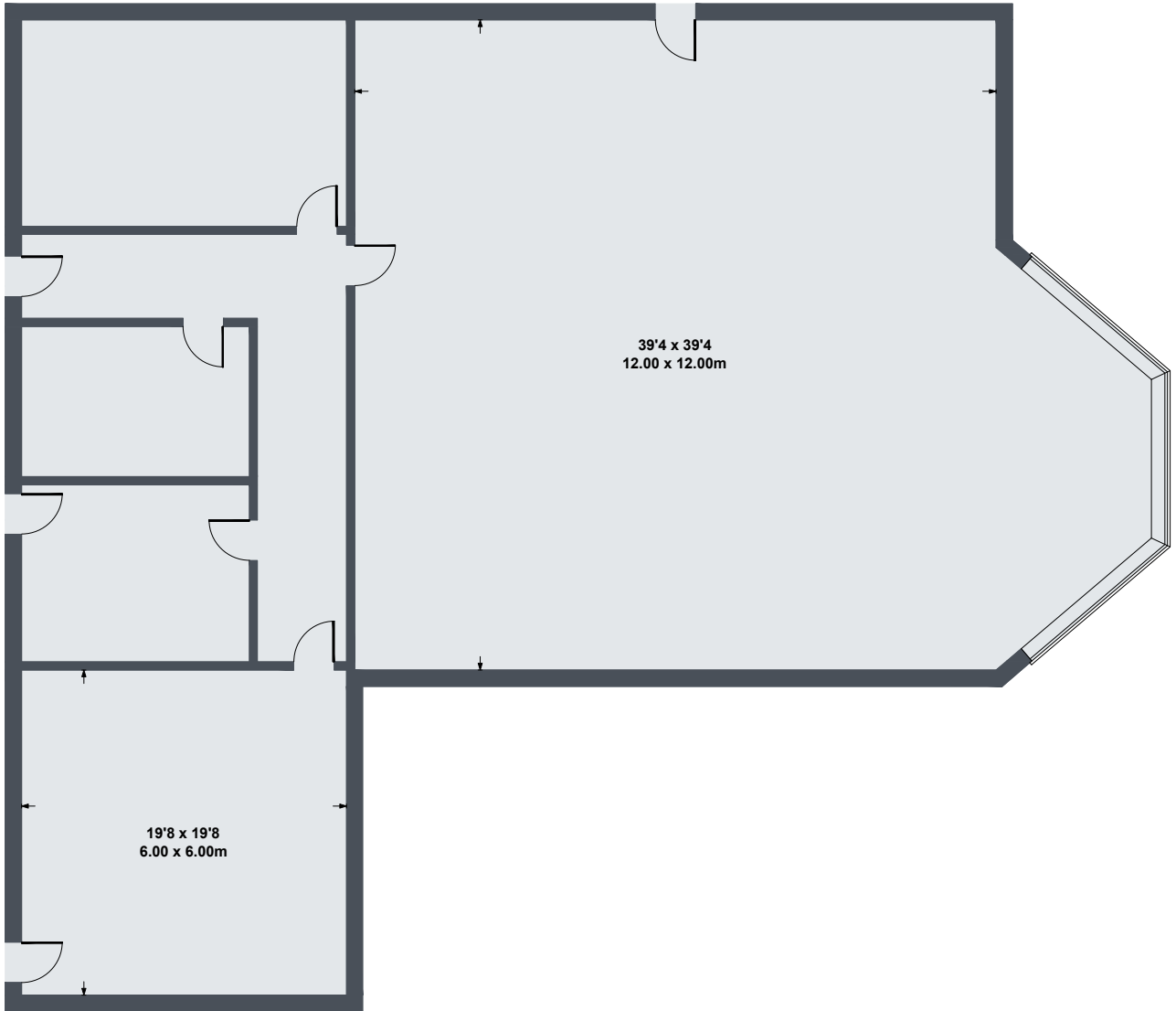


# Ashfield Caravan Park TS27 3HY

Approximate Gross Internal Area

2874 sq ft - 267 sq m



## RECEPTION BLOCK

### SKETCH PLAN FOR ILLUSTRATIVE PURPOSES ONLY

All measurements walls, doors, windows, fittings and appliances, their sizes and locations, are approximate only. They cannot be regarded as being a representation by the seller, nor their agent.

Produced by Potterplans Ltd. 2025